

State of Wyoming Corner Record

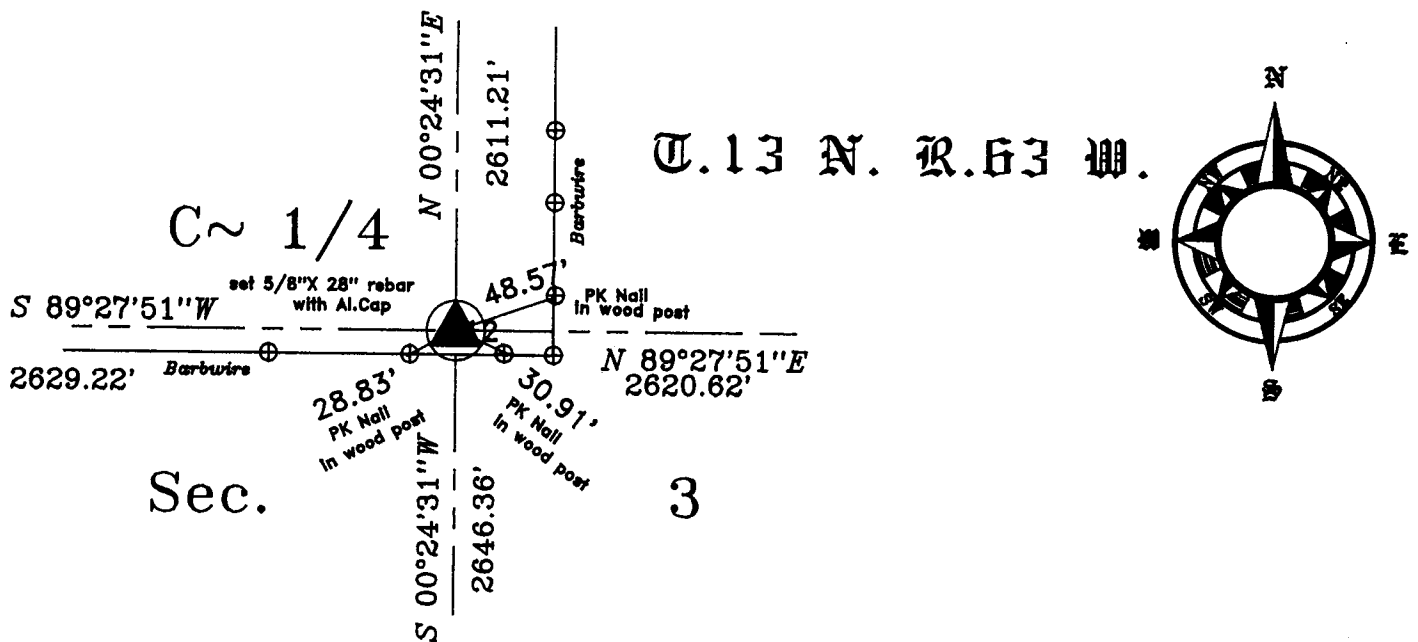
(In compliance with the *CORNER PERPETUATION AND FILING ACT*, et seq., and the Rules and Regulations of the Board of Registration for Professional Engineers and Professional Land Surveyors) Wyoming Statutes, 1997, Section 33-29-140,

Reverse side of this form may be used if more space is needed.

Record of original survey and citation of source of historical information (if corner is lost or obliterated). Description of corner monumentation evidence found and/or monument and accessories established to perpetuate the location of this corner. Sketch of relative location of monument, accessories, and reference points with course and distance to adjacent corner(s) (if determined in this survey). Method and rationale for reestablishment of lost or obliterated corner.

The Center 1/4 of the Section was not set during the GLO Survey.

Set 5/8"X 28" rebar with an Aluminum Cap at the Center of section as established by Bearing ~ Bearing intersection as perscribed in the 1973 BLM Manual. The Corner was established and set at a point lying Westerly a distance of 48.57 feet from a PK nail set in the square wooden gate post for a Barbwire fence running to the North, and 30.19 feet distant Northwesterly from a PK nail in a Cedar fence post in a barbwire fenceline being West of the fence corner, and lying Northeasterly from a PK nail set in a Cedar fence post a distance of 28.83 feet. Said Center of Section 3 lies S00°24'31"W of the 1/4 corner common to Section 3 and Section 34 a distance of 2611.21 feet, and N00°24'31"E a distance of 2646.36 feet from the 1/4 corner common to Section 3 and Section 10, and N89°27'51"E a distance of 2629.22 feet from a 1/4 corner common to Section 3 and Section 4 and S89°27'51"W a distance of 2620.62 feet from the 1/4 corner common to Section 3 and Section 2.



Date of Field Work: _____ Office Reference: _____

CROSS INDEX DIAGRAM

A	1	2	3	4	5	6	7	8	9	10	11	12	13	14	15	16	17	18	19	20	21	22	23	24	25	26
B																										
C						6																				
D																										
E																										
F																										
G																										
H																										
J																										
K																										
L																										
M																										
N																										
O																										
P																										
Q																										
R																										
S																										
T																										
U																										
V																										
W																										
X																										
Y																										
Z																										

Land Surveyor / Firm / Address
 Terrestrial Surveying & Mapping Co.
 1127 Terry Ranch Road
 Cheyenne, Wyoming 82007

This corner record was prepared by me or under my direction and supervision

Larry T. Perry L.S.

SEAL & SIGNATURE

Telephone: 307 634 9360



Corner Name: C~1/4 Section: 3 T.13 N. R.63 W. ; 6th P.M. Cross-Index No.: 15-C SBRPEPLS/PLSW; March 1994; PLSW January 1998